

TEMPEST[™] excellence

SERVICE INFORMATION

Service Information Number: SI-004

Subject: Identifying Aero Accessories Overhauled Dry Air Pumps versus Airborne.

Applicability: Aero Accessories Overhauled Dry Air Pumps

This service information is to aid owners / mechanics in rapidly identifying dry air pumps installed on single-engine or multi-engine piston aircraft.

Parker Hannifin Airborne Dry Air Pumps typically display the following identification sticker:

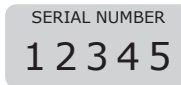


Airborne Pumps: utilize alphanumeric serial numbers

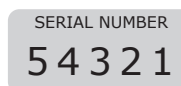
Example: S/N: 12AR-550
(Reference Airborne Service Letter 39A)
THIS PUMP HAS NOT BEEN OVERHAULED

Parker Hannifin Airborne symbol is for representative reference only

Aero Accessories, Inc. OVERHAULED Dry Air Pumps typically display the following identification stickers:



Overhauled Airborne Dry Air Pumps have a PURPLE Model number sticker with 'FAA Approved Overhaul' printed on it. Aero Accessories utilizes separately attached serial numbers not alphanumeric



Overhauled Tempest Dry Air Pumps have a BLUE Model number sticker with 'FAA Approved Overhaul' printed on it. Aero Accessories utilizes separately attached serial numbers not alphanumeric

ISSUED			REVISED			 Aero Accessories, Inc. 1240 Springwood Avenue Gibsonville, N.C. USA	PAGE No.	REVISION
MO	DAY	YR	MO	DAY	YR		1 of 1	Original
04	16	08	00	00	00			